

# CoEmmunicator

Brought to you by the Facilities Management Office

## INSIDE THIS ISSUE

Updates 1

CoE Facilities 2020 Projects 2

CoE Community Re-entry Events 6

Severe Weather Preparedness 8

Welcome Back! 9

### FMO Staff Changes



After 6-1/2 years with FMO, we are saddened to note that Mike Dobmeier has moved on to greener pastures in Chicago. His last day was June 18. RPM has an active search underway for his replacement. We hope to have someone new on board before the start of the Fall term.

Congratulations and best wishes in your new endeavor, Mike!

If you have any questions regarding physical space requests, space data inquiries, M-GIS, or energy analysis please email [coefmostaff@umich.edu](mailto:coefmostaff@umich.edu)

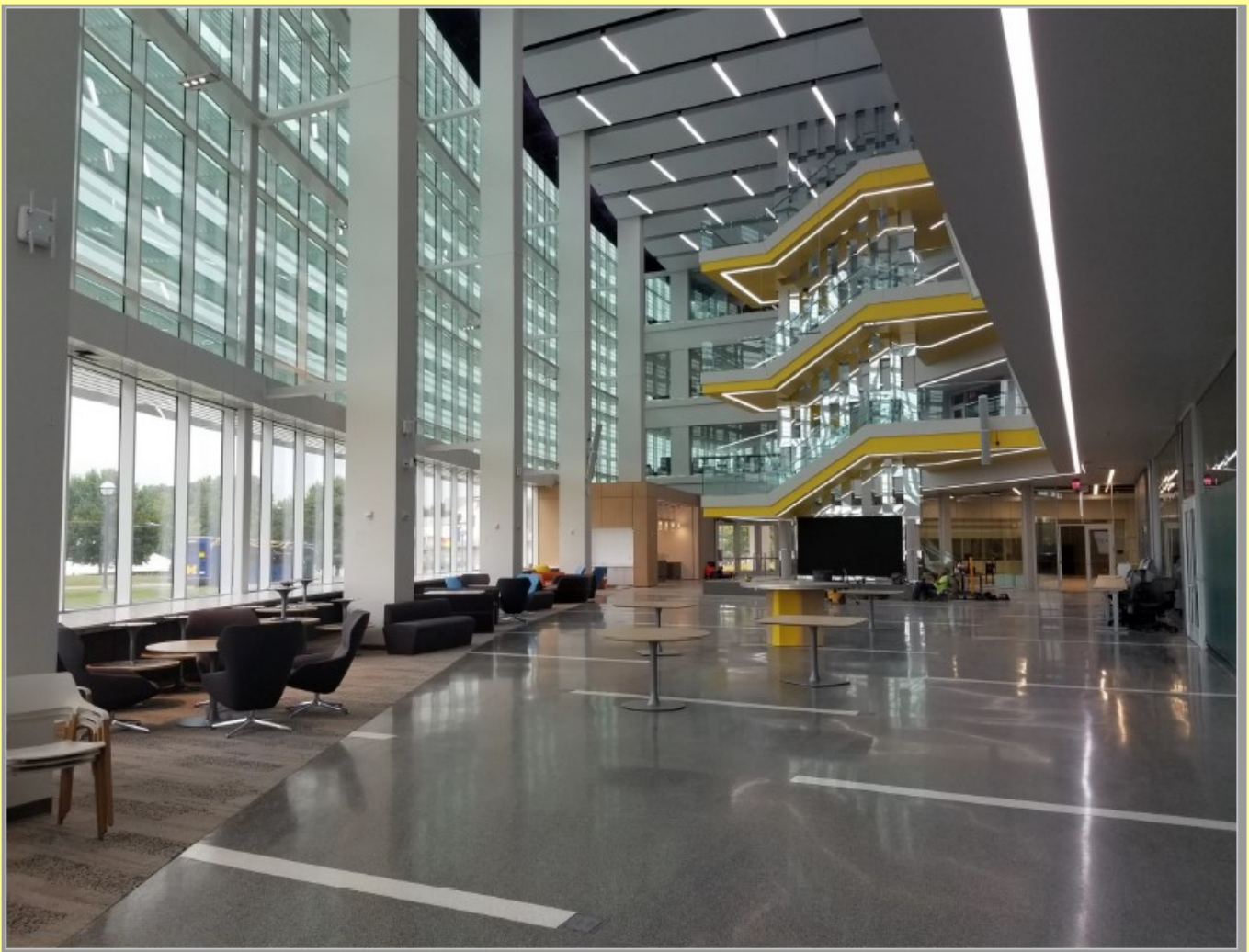
### Drone Surveillance System Installation

In an effort to safeguard the flight path of Survival Flight, and to monitor drone traffic on North Campus, DPSS will be installing a drone surveillance system on the roof of the Engineering Research Building I.



**Recently completed construction/renovation projects.**

**In January, the Ford Robotics Building was completed and occupied. The photo below is of the three story atrium.**







**CLaSP renovated a small second floor room in CSRB to create a student lounge.**

# Renovations to the CEE Hydraulics lab in GGB for Prof. Jeremy Bricker







**Prof. John Keiffer's Lab Renovation in Dow**

## CoE Community Re-Entry Events



Many of us are starting the transition back. Some have been back for a while.

But, we all deserve some support as we gear up for the Fall.

The College is hosting three opportunities to help you get some important stuff done in preparation for Fall - and we threw in some goodies.

All in a safe outdoor setting on the North Campus Gerstacker Grove.

**TIME/DATE:**

On the Gerstacker Grove from 11 AM - 1 PM

Registration will be limited to the first 250 people per event.

We encourage you to come by with your team, so check with them before you RSVP.

Secure your spot today by RSVP'ing for one of the three days.

Tuesday, July 13

Wednesday, July 21

Thursday, July 29





# Severe Weather Preparedness

The 2021 severe weather drills were canceled this year, in order to avoid large gatherings, so we're bringing you some important reminders.

All CoE buildings have Evacuation Maps posted in the halls, like the one you see below. The Shelter in Place area is noted in yellow. This is the safest place in the building during a severe weather event.

If you become aware of a tornado (i.e., from an UM Emergency Alert, local media or Ann Arbor's outdoor warning sirens), please take the following precautions:

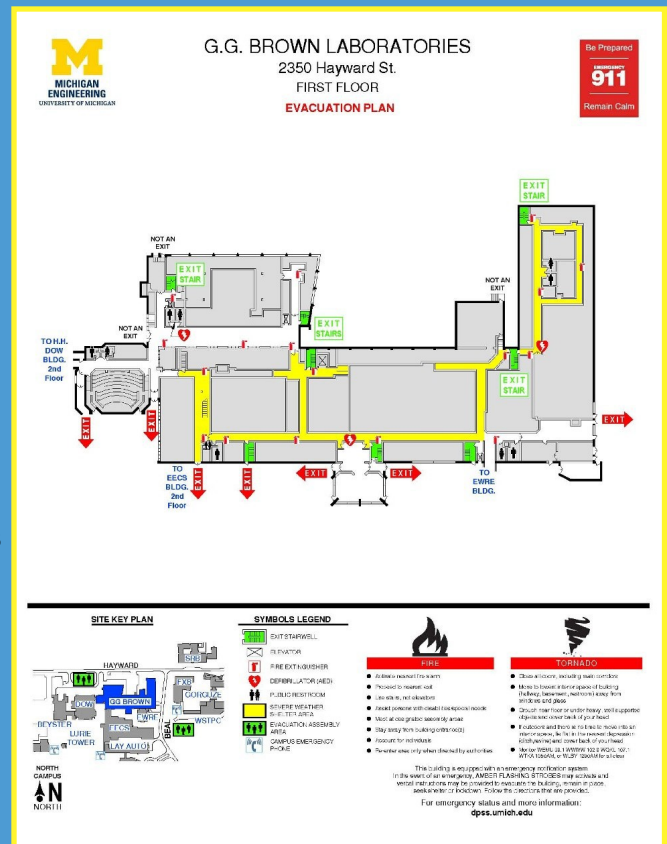
Persons outside should immediately find shelter.

Safe shelters include:

- Internal hallways on the lowest floors of buildings
- Internal classrooms or offices without glass windows, walls and panels
- Basements
- Internal stairwells that do not have windows

Safe shelters DO NOT include:

- Rooms with high-profile or long ceilings, such as gymnasiums, auditoriums and cafeterias
- Rooms with an outside wall or windows
- Doors that have glass inserts
- Rooms with atriums, skylights or glass walls



Monitor local weather via radio, internet or TV to stay informed. Remain in a sheltered area until the tornado warning expires or emergency personnel have issued an “all clear” signal. Upon exiting your shelter, be wary of downed power lines, gas line breaks, broken glass or any other potentially sharp or dangerous objects. Even after the tornado has passed, avoid any buildings or structures that may have been damaged; you do not want to be struck by debris or trapped in a collapse.

More Severe Weather Event info can be found at the [DPSS website](http://dps.umich.edu).



**We've missed  
you!**



**We're happy to see our buildings waking up and being full of life again!**

**If there is anything that the Facilities Management Office can do to make your transition back to campus smoother please don't hesitate to reach out to [coefmostaff@umich.edu](mailto:coefmostaff@umich.edu)**

**For questions regarding the newsletter, please contact the CoE Facilities Management Office.  
E-mail [keelar@umich.edu](mailto:keelar@umich.edu) Telephone (734) 647-7070**

**WHEN YOU WANNA  
GET IN SHAPE FOR THE SUMMER**



**BUT LIFE IS HARD**

MEMEFUL.COM

**BORDER COLLIE  
WORKING FROM HOME**

