

CoCommunicator

Brought to you by the Facilities Management Office



Welcome Malcolm Hayden!

INSIDE THIS ISSUE

Welcome
Malcolm Hayden!

Pg 1

Facility Manager
Spotlight

Pg 2

Leinweber CSI
Building

Pg 5

Summer Bike
Removal Program

Pg 7

2022 Severe
Weather Drills

Pg 8

Prescribed Burns

Pg 9



Malcolm is a lifelong resident of southeast Michigan, specifically Ypsilanti. A product of the Willow Run School District, during his formative years Malcolm was very active participating in athletics such as basketball and golf while also serving his peers by working on the Superintendent's Student Advisory board.

After completing his secondary education, Malcolm and three of his close childhood friends enrolled at the University of Missouri to pursue their bachelor's degrees. While at the University of Missouri, Malcolm began working in facilities at the student recreation complex on campus. Malcolm graduated with a Bachelor of Science degree in Sport Management.

After 3 years as the Assistant Director of Facilities at the University of Miami (FL), Malcolm returned to southeast Michigan to serve as the Assistant Director of Facilities at the Intramural Sports Building with the University of Michigan Recreational Sports department. Looking to expand his facilities "toolbox" Malcolm accepted the position of Facility Manager/Coordinator with the College of Engineering Facilities Management Office in February 2022.

Please contact Malcolm with questions regarding facilities issues in the Chrysler Center, ERB I/II, Gerstacker Bldg., PML and SI-North.

Email: mhayd@umich.edu / Phone: (734) 763-4094

Facility Manager Spotlight



Please enjoy our interview with Rob Blackburn, the Facilities Coordinator/Manager for Nuclear Engineering & Radiological Sciences.

– Before working at UM, what was the most unusual or interesting job you’ve ever had?

I have held a number of positions at UM over the last 35 years that have included Nuclear Medicine Radiopharmaceutical production, Co-60 operations & research (including sterilization of human bones for implant & reconstructive surgery), Laboratory Operations Manager (Senior Reactor Operator license required), and ultimately Reactor Decommissioning Manager before working currently for NERS in CoE. The most interesting job I held before UM was with Ann Arbor Nuclear where I worked on a number of projects. I worked in Nuclear Chemistry research using chemicals to store gamma & neutron energy for use in spacecraft. I also worked in nuclear research on two parasite vaccines for use by the armed forces to protect them against the Schistosomiasis Mansonii and Filariasis parasitic worms found in parts of South America & Africa.

– How has UM changed since you started?

The biggest changes at UM since I started have been the huge increase in the amount of research money and the buildup of North Campus and CoE. When I started there was a big parking lot between the Chrysler Center and the original Phoenix Memorial Laboratory (PML)/Ford Nuclear Reactor (FNR) buildings and a large field north of where the Duderstadt building is located. Parking was never an issue for roughly my first decade and a half at UM.

Facility Manager Spotlight cont.

– What has been your favorite project at UM?

My favorite project/work at UM was operating our Co-60 research facility from 1987-2014. The irradiator was a 25,000 Curie (Ci) pool facility. Collaborating with many researchers on projects using our High Gamma Irradiator was interesting and always challenging and changing. At the height of operations, our facility was irradiating materials 24/7. Irradiations included almost nonstop sterilizations of human bone, prosthetics, filters, operating room instruments, & soil for various research and production use. Irradiations of electronics, reflectors, & food were also a highlight, at much lower irradiation levels.

-What is your proudest moment at UM?

I don't have just one proudest moment. My career at UM has been a series of proud moments working on radiopharmaceuticals that saved lives, sterilizations of bones & prosthetics to make people's lives better, reactor operations that were deemed necessary & useful for research and providing safe uses of nuclear energy throughout the US. and Canada until July 2003. Also completing the decommissioning of the reactor without any safety nor environmental incidents and being involved in the construction of the Nuclear Engineering Laboratories (NEL) that replaced the FNR in 2017 were very proud moments.

– What aspect of your role do you enjoy the most?

The variety of roles in my job and especially working with faculty & staff to assist with research activities.

– If you could be anyone from any time period, who would it be and why?

I would want to be astronaut Neil Armstrong and being the first to walk on the moon July 1969. Being the first to walk on the moon and knowing the journey was so dangerous would be such an intensely exciting prospect to experience. I grew up watching the Apollo launches when in school and on TV during the summers through the late 60's and early 70's and then enjoyed the resurgence of the space program with the shuttle flights in the late 70's & early 80's when I completed HS and attended UM.

Facility Manager Spotlight cont.

– If you were stuck on an island what three things would you bring?

I would definitely want to bring my wife Kathy and children/grand children, hunting implements & seeds for food, and clothing to protect against the elements.

– What has been the most important innovation you have witnessed in your lifetime?

The personal computer has been the most important innovation I have witnessed. The speed at which computers and software have evolved has been absolutely incredible.

– What would you most like to tell yourself at age 13?

I would tell myself to not stress about my appearance to others and learn to feel comfortable & confident with myself sooner than I did. I remember worrying about my curly hair way too much at that age and even getting an Afro hairstyle around that age. Spending all that time worrying must be why I'm clean shaven now. :)



Leinweber CSI Building

Current schedule:

- CDs - March 2022
- Bid/Award process - March 2022 - June 2022
- Construction - June 2022 - March 2025
- Occupancy - April 2025

Walbridge hired as Construction Manager

163,000 gsf, 5 stories plus mechanical penthouse, 4 connecting corridors to Beyster, additional space for CSE labs, faculty offices, and 3 CoE classrooms

New home for the School of Information

HVAC system connected to new geothermal plant, 5,000 gsf building west of NC-48, geo wells in parking lot





Bike Removal Program

The University of Michigan Grounds Department will begin to identify and remove abandoned bicycles from bike racks on the Ann Arbor campus beginning in early April.

Bikes that show signs of abandonment, such as bent rims, rusted or broken chains, deteriorated tires or frozen brakes, cables or shifters will have bright colored tags placed on them.

DPSS will be provided with each tagged bike's location, model, color serial number and registration documentation, if available.

Tagged bikes left on campus after May 15th will be considered abandoned and will be removed by the Grounds Department.

Bicycle owners who want to retrieve their bikes should contact the U-M Grounds Department at 734-763-5539. All collected bicycles will be donated to a local non-profit to be refurbished and donated to Michigan schools.



Severe Weather Preparedness

Per direction from Emergency Management, we will be completing our severe weather drills this year.

However, we will be making accommodations for social distancing. For those buildings that have small shelter-in-place zones, people will be allowed to spread out into surrounding areas that may not be in the actual shelter-in-place zone during the drill. Our goal is that people become accustomed to where the safe zone is located in each building and accustomed to listening to the Emergency Response teams when they come to evacuate them to the shelter-in-place zone.

Those scheduled to work from home on the day their building's drill is planned will not be required to participate, however, all occupants should familiarize themselves with the severe weather tips provided by DPSS.

All CoE buildings have Evacuation Maps posted in the halls, like the one you see above. The Shelter in Place area is noted in yellow. This is the safest place in the building during a severe weather event.

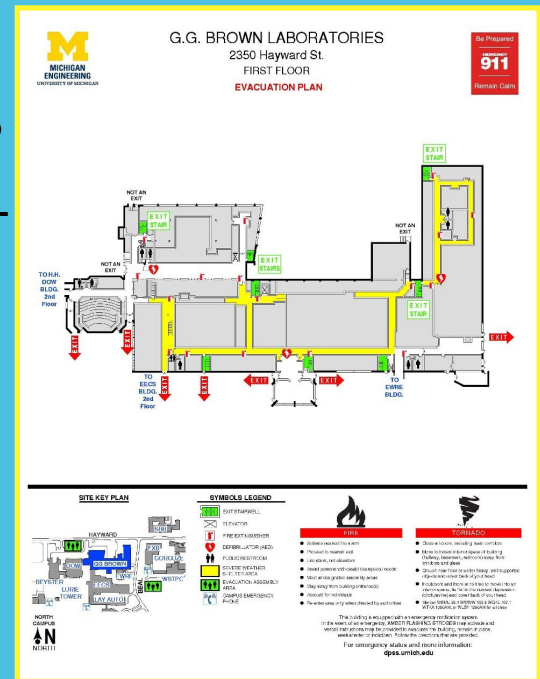
If you become aware of a tornado please take the following precautions:

Persons outside should immediately find shelter. Safe shelters include:

- ☐ Internal hallways on the lowest floors of buildings
- ☐ Internal classrooms or offices without glass windows, walls and panels
- ☐ Basements
- ☐ Internal stairwells that do not have windows

Safe shelters DO NOT include:

- ☐ Rooms with high-profile or long ceilings, such as gymnasiums, auditoriums and cafeterias
- ☐ Rooms with an outside wall or windows
- ☐ Doors that have glass inserts
- ☐ Rooms with atriums, skylights or glass walls



Prescribed Burns

The University of Michigan Grounds Services is planning to conduct controlled burns in the coming weeks. The areas targeted for this spring are:

West Ann Arbor Health Center Prairie (North prairie)

NCRC Southeast Stormwater Basins (Perimeter around basins)

NCRC Northwest Stormwater Basins (Perimeter around basins)

Space Research Woodlot and Prairie (Woodlot north of Space Research)

School of Music Woodlot and Prairie (Woodlot and Prairie east of School of Music)

The burns will not take place during any of the commencement activities (Thursday, April 28th through Sunday May 1st).

The burns will be done by Plantwise, a local prescribed burn contractor who specializes in ecological burns and native plant restoration. It is recommended for ecological reasons to conduct these burns during the early spring, as weather and wind conditions will permit.

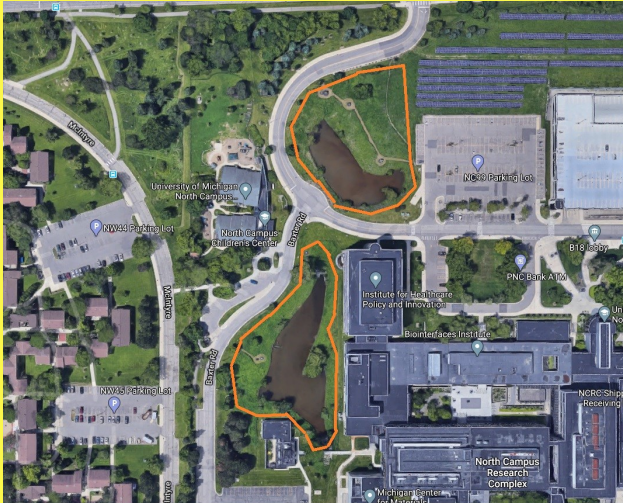
EHS Fire Safety, DPSS and the Ann Arbor Fire Department will be notified in advance of each burn and are issuing the appropriate permits. We will conduct these burns during conditions that will minimize the direct effect and persistence of smoke.

Fire is an important land management tool and a critical regenerative process for several of our local ecosystems. Many areas treated with fire have significantly more blooming wildflowers in the following years. In addition to improved aesthetics, these small, controlled fires are intended to manage the invasive species that are reducing the native biodiversity in our natural areas, and to reduce the amount of combustible material in a controlled manner. For additional information on UM Sustainable Land Management click [here](#).

For more information about prescribed burning in Michigan, please visit the Michigan Prescribed Fire Council [website](#).



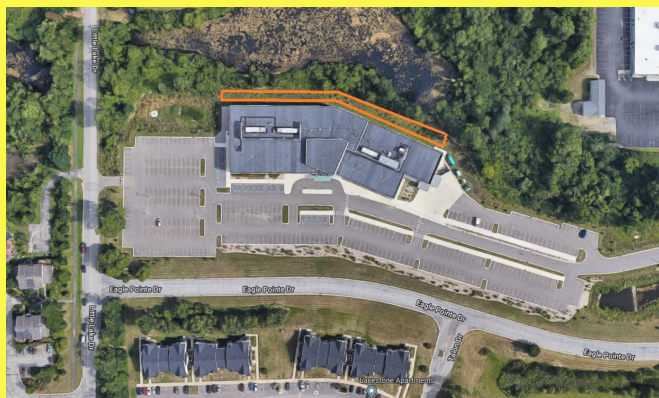
Prescribed Burns cont.



NCRC Northeast Stormwater Basins



School of Music Woodlot and Prairie



West Ann Arbor Health Center Prairie



NCRC Southeast Stormwater Basins



Space Research Woodlot and Prairie



Please don't hesitate to reach out to the Facilities Management Office (coefmostaff@umich.edu) regarding any facility issue. You can also report an issue on our website, www.rpm.engin.umich.edu/facilities/

